

# ALL-NEW 2017 SUPER DUTY



# THE TOUGHEST, SMARTEST, MOST CAPABLE SUPER DUTY EVER.

Introducing an all-new F-Series Super Duty.<sup>®</sup> We set the standard in truck capability. Now we've raised it even higher. This tough-as-nails workhorse is loaded with material innovation and advanced technology. Rust can't touch its all-new high-strength, military-grade, aluminum alloy body and cargo box.<sup>1</sup> Its all-new, fully boxed, high-strength-steel ladder frame is the strongest Super Duty pickup frame. Ever. Before the first one rolls off the line, we'll have logged over 19 million km of cumulative testing. The all-new 2017 Super Duty is Built Ford Tough.<sup>®</sup> In every way that matters.

## FIRST-IN-CLASS<sup>2</sup>

- High-strength, military-grade, aluminum alloys
- Inflatable rear-seat outboard safety belts<sup>3</sup>


## BEST-IN-CLASS

- 925 lb.-ft. of diesel torque, 440 horsepower
- 430 lb.-ft. of gas torque
- 385 standard gas horsepower
- 32,500 lbs. (14,742 kg) max. gooseneck towing capacity<sup>4</sup>
- 27,500 lbs. (12,474 kg) max. 5th-wheel towing capacity<sup>4</sup>
- 21,000 lbs. (9,525 kg) max. conventional towing capacity<sup>4</sup>
- 7,630 lbs. (3,461 kg) max. payload capacity<sup>4</sup>
- 41,800 lbs. (18,960 kg) max. Gross Combined Weight Rating (GCWR)<sup>4</sup>

## CLASS-EXCLUSIVE

- Up to 7 available cameras<sup>3</sup> ■ Adaptive steering<sup>3</sup>
- Adaptive cruise control and collision warning with brake support<sup>3</sup>
- BLIS<sup>®</sup> with trailer coverage and cross-traffic alert<sup>3</sup>
- LED sideview mirror spotlights
- Multicontour front seats with Active Motion<sup>®3</sup>
- Power-deployable running boards<sup>3</sup>
- PowerScope<sup>®</sup> power-telescoping/-folding trailer tow mirrors<sup>3</sup>
- Remote tailgate lock and release<sup>3</sup>
- Smart Trailer Tow Connector<sup>3</sup>
- Standard flat load floor inside<sup>5</sup>
- Collapsible under-seat storage<sup>3,6</sup> that folds into the flat load floor
- Tailgate step<sup>3</sup> ■ Trailer Reverse Guidance<sup>3</sup>
- Trailer Tire Pressure Monitoring System<sup>3</sup>

F-350 XLT Crew Cab DRW 4x2 in Oxford White with available equipment. Vehicles throughout this brochure may be shown with optional and aftermarket upfit equipment. <sup>1</sup>6000-series aluminum alloy. <sup>2</sup>Class is Full-Size Pickups over 8,500 lbs. (3,856 kg) GVWR based on Ford segmentation. <sup>3</sup>Available equipment. <sup>4</sup>When properly equipped with available factory-installed equipment. <sup>5</sup>SuperCab and Crew Cab. <sup>6</sup>Crew Cab only.



It's astounding what an F-Series Super Duty® will haul over its lifetime. Stumps. Pipe. Tools. Machinery. 5th-wheel/gooseneck trailers. So we've made the cargo box of the all-new 2017 Super Duty even more capable. It's the first and only one in its class made from high-strength, military-grade, aluminum alloy. To handle the increased loading requirements of a Super Duty workload, we re-engineered the cargo box and upgraded its panel thickness. It does not rust. It's more dent- and ding-resistant. Simply put, it is

# THE TOUGHEST SUPER DUTY BODY EVER.

Use of this advanced material saved weight as well, so we reinvested those savings directly into upgrading the essential components that work the hardest – the frame, axles, leaf springs, transfer case, driveline and trailer hitches. With a stronger frame, tougher body and upgraded componentry, the 2017 Super Duty tows more, hauls more, and is more capable than ever – while weighing up to 350 pounds (159 kg) less than before. This is the Future of Tough.



# THE STRONGEST SUPER DUTY FRAME EVER.

Super Duty® demands a foundation built for extremes. This all-new, fully boxed ladder frame – made of 95% high-strength steel – is engineered to be up to the task. With 6 times more high-strength steel than the previous generation, it's up to 24 times stiffer – helping to produce the best ride and steering of any Super Duty ever. That's just the stability you need when towing a best-in-class 32,500 lbs. (14,742 kg) of heavy-duty machinery behind you.<sup>1</sup>

Through-welded, closed-section crossmembers, used on Super Duty for the first time, help increase torsional stiffness. Frame mid-rails are 1.5" taller for added stiffness. And an e-coat paint process encases all that strength for extreme durability and corrosion protection.

# 24X STIFFER

# POWER STROKE

Under the hood of the all-new Super Duty is the strongest 6.7L Power Stroke® Turbo Diesel engine<sup>1</sup> yet. New this year: twin-pilot injection for smooth acceleration, upgraded pistons, rods, crankshaft, cylinder heads and gaskets. Plus, a driver-controlled engine exhaust brake with On, Off and Auto settings that allows selective use of engine braking to help slow the truck down and control vehicle speed. This proven diesel is paired with an equally rugged TorqShift® 6-speed automatic transmission. Both are designed, engineered and built by Ford. Together, they deliver its highest combination of horsepower and torque ever.

The numbers push, pull and speak for themselves. Larger fuel tanks – up to 181 litres maximum<sup>1</sup> – help improve your range of travel as well. The most tested Power Stroke diesel ever is also B20-capable. And right where it belongs in the 2017 Super Duty.

**BEST-IN-CLASS**  
**440 | 925**  
**HORSE | LB.-FT.**  
**POWER | TORQUE**



**6.7L POWER STROKE**  
TURBO DIESEL

F-350 PLATINUM Crew Cab 4x4 in Shadow Black with available equipment. <sup>1</sup>Available feature.

The Built Ford Tough® 6.2L engine delivers the most torque of any gas engine in the class. Designed, engineered, built and torture-tested by Ford, the standard engine on F-250 and F-350 Super Duty® is also E85-capable. An enhanced long-runner intake manifold combines with revised camshaft profiles this year to increase peak torque by 25 lb.-ft. over the previous generation. With significant improvements in torque performance, the 6.2L delivers better working power throughout the rpm range – for improved driveability overall, and enhanced hauling and towing performance.

Alternative fuel options include a CNG/Propane Gaseous Engine Prep Package<sup>1</sup> that readies your truck to be converted to a bi-fuel vehicle with the ability to switch between compressed natural gas (CNG) or propane autogas and gasoline. Providing flexibility and extended range, trucks upfit to a bi-fuel system include a tank for each type of fuel. For ordering details, please see your local Ford of Canada Dealer. Purchasing a Super Duty upfit this way may even qualify for tax incentives related to alternative-fuel vehicles.

## BEST-IN-CLASS GAS

# 430 LB.-FT. TORQUE

# 385 HORSE POWER



**FLEX FUEL**



F-250 XLT Crew Cab 4x4 in Magnetic with XLT Premium and FX4 Packages and available and aftermarket equipment. <sup>1</sup>Available feature. Vehicle will be equipped with the standard factory gasoline fuel system. This package does not include CNG/propane fuel tanks and lines, which are supplied, installed and warranted by an authorized CNG/propane Qualified Vehicle Modifier (QVM).

<sup>2</sup>Available feature. <sup>3</sup>When properly equipped. <sup>4</sup>Restrictions apply.

**The TorqShift® 6-speed SelectShift® automatic transmission with tow/haul mode** delivers smooth, efficient performance. A multi-segment clutch friction plate design improves oil flow, reduces power loss and maximizes transmission productivity. A high-efficiency fluid filter has a fluid change interval of 240,000 km.

### SelectShift and Progressive Range Select

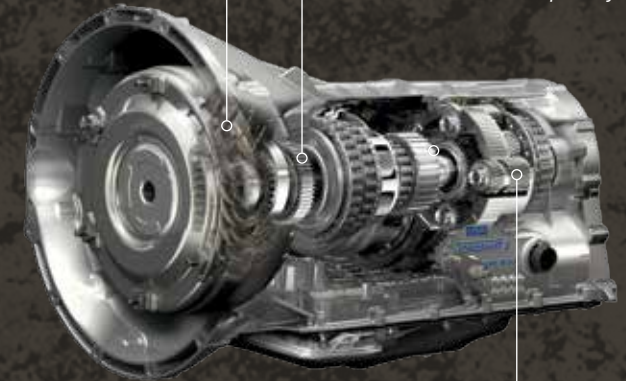
- Manual upshift and downshift capability
- Progressive range select mode lets you reduce the available gear range in difficult road/load conditions
- Tow/haul mode helps to eliminate unwanted frequent gear-shifting on steep uphill grades, while allowing engine braking to help maintain vehicle speed when descending a steep grade

### 3-Plate, 2-Stage Torque Converter

handles substantial horsepower and torque forces from the 6.7L Power Stroke® Turbo Diesel, and helps both engines work efficiently at low rpm thanks in part to low-speed lockup capability (down to 900 rpm).

### Live-Drive Power Takeoff

**Provision<sup>2</sup>** is directly linked to the crankshaft, so the PTO output gear delivers power anytime – whether the vehicle is moving or not. With both engines, the TorqShift transmission provides stationary and mobile-mode PTO capability.<sup>3</sup>



**Sinter-Brazed Pinion Carriers** help manage the diesel's extreme low-end torque, as well as the high shift speeds of the gas engine. When teamed with a gasoline engine, the transmission features up to 4-pinion front carriers and 6-pinion rear. Diesel models feature up to 6-pinion carriers in front and up to 8-pinion carriers in the rear.<sup>4</sup>

**A TorqShift-G 6-speed SelectShift automatic transmission with tow/haul mode**, right-sized for weight savings and efficiency, is new this year and standard on Super Duty F-250 models with the 6.2L. Since engines and transmissions are both designed by Ford, each powertrain works seamlessly with chassis components and vehicle calibrations.



# EVEN THE DIRT WILL BE IMPRESSED.

After all, it has the best vantage point to see where the weight savings from the all-new 2017 F-Series Super Duty® have been reinvested. And it is a sight to behold.

Front suspension: optimized for increased capability with new shocks, radius arms, springs, larger lower bushings and upgraded stabilizer bars with new collars. Rear suspension: upgraded and optimized with new shocks, bushings and re-engineered leaf springs for improved stance under load. Brake master cylinder on F-450: larger, for less brake fade under extreme braking conditions. Trailer hitch receivers: bigger, stronger with more weight-carrying capability. This Super Duty is ready to get down and dirty.

**Front and rear axles are stronger and more capable.** They've been re-engineered with new gear and bearing designs, and optimized for weight to be more efficient than their predecessors. All-new rear axles on DRW trucks have more weight-carrying and towing capability than the previous generation.

**Driveshafts, transfer cases and U-joints** were upgraded to handle the increased torque output of both Super Duty engines. An electromagnetic clutch in the new transfer case provides smooth and immediate shift-on-the-fly 4WD capability<sup>1</sup> in conditions where additional traction is required.

**Standard trailer hitches** are larger with increased ratings to handle heavier loads and, on many configurations, are now weight-carrying<sup>2</sup> up to the trailer hitch ratings. Hitch receiver size has also increased, and reducers are provided to cover all your towing needs.

<sup>1</sup>Available feature. <sup>2</sup>When properly equipped, on select models.

# BEST-IN-CLASS 32,500 LBS. MAX. TOWING

Towing numbers lead the class across the board. Best-in-class max. towing: Super Duty® F-450 at a whopping 32,500 lbs. (14,742 kg).<sup>1</sup> Best-in-class max. 5th-wheel towing: F-350 DRW at 27,500 lbs. (12,474 kg).<sup>1</sup> And best-in-class conventional towing: F-350 DRW at 21,000 lbs. (9,525 kg).<sup>1</sup> If you need to tow more than any other truck in the class,<sup>1</sup> you'll be in a Super Duty. It's optimized for heavy hauling. So you can pull the most weight – confidently.<sup>1</sup>

To help you handle it all, the 2017 F-Series Super Duty is our smartest and most capable towing machine. Ever. Smart technology helps make towing easier than ever: Cameras<sup>2</sup> aid in backing up and connecting your trailer; class-exclusive adaptive cruise control<sup>2</sup> makes handling all that weight seem almost effortless; and adaptive steering<sup>2</sup> makes it easier to manoeuvre your trailer on the road, as well as park it at your destination.

# IMPROVE YOUR LINES OF SIGHT.

When there's valuable equipment in tow, what you can see makes all the difference. With up to 7 available cameras,<sup>4</sup> the all-new 2017 Super Duty<sup>®</sup> helps you see more than ever before – solidifying our leadership in delivering the most capable, high-tech towing technology.

**A front 180-degree camera with washer<sup>1,2</sup>** not only helps to see ahead, but around tight corners as well. It can see to the left and right before you have a line of sight, displaying a view around corners, down alleys and out of parking spots as you slowly drive forward.

**A camera in each sideview mirror,<sup>1,2</sup>** along with the front and rear cameras, generates a 360-degree view. This all-around view of Super Duty is displayed in the 8" colour LCD screen in the centre stack (shown top right).

**A forward-facing camera<sup>1</sup>** is utilized by lane-keeping alert.<sup>1,3</sup> It can detect lane markings and send vibration pulses to the steering wheel if it senses Super Duty drifting unintentionally out of its lane.

**A centre high-mounted stop light (CHMSL) camera<sup>1</sup>** with zoom function helps provide greater visibility of the cargo in the cargo box while in Reverse (shown middle right), and is particularly helpful when connecting a 5th-wheel/gooseneck trailer.

**A rear view camera<sup>1</sup>** with zoom function, mounted in the tailgate handle, provides a view of what's behind Super Duty and helps in the hookup of conventional trailers. It is one of the cameras used by the 360-degree camera with Split-View Display.<sup>2</sup>

**A class-exclusive customer-placed trailer camera<sup>4</sup>** can be attached to the rear of your trailer. It shows you what's behind the trailer when backing up, and is weatherproof. The image can be accessed on the 8" colour LCD screen in the centre stack.



360-Degree Camera Split-View Display<sup>2</sup>



CHMSL Camera View<sup>1</sup>



Trailer Reverse Guidance<sup>1</sup> automatically switches between side and rear camera views to show you what is most relevant while backing up your trailer, and provides overlays to guide you.

F-350 LARIAT SuperCab 4x4 in Magnetic with Chrome Package and available equipment. Driver-assist features are supplemental and do not replace the driver's attention, judgment and need to control the vehicle. <sup>1</sup>Available feature. <sup>2</sup>Included in the 360-degree camera with Split-View Display. <sup>3</sup>Lane-keeping alert does not control steering.

This high-strength, military-grade, aluminum alloy cargo box is reporting for duty. Super Duty.<sup>®</sup> Best-in-class payload sits inside these walls. In fact, max. payload numbers have increased across this F-Series lineup. Panel thickness of the cargo box: upgraded. Reinforcements underneath the box: fortified. Dent and ding resistance inside the box: better than steel. Susceptibility to red rust: gone.

Accessing your payload is easy, too, thanks to extended step bars<sup>1</sup> that reach to the side of the cargo box, as well as our class-exclusive tailgate step<sup>1</sup> in back. To help increase your confidence while hauling heavy loads, every Super Duty features AdvanceTrac<sup>®</sup> with RSC<sup>®</sup> (Roll Stability Control<sup>™</sup>) – that now includes DRW models too. It utilizes 2 gyroscopic sensors to automatically help you avoid skidding and fishtailing, helping you keep all wheels firmly planted.<sup>2</sup> Load up. Head out.

# BEST-IN-CLASS 7,630 LBS. MAX. PAYLOAD<sup>3</sup>



F-350 XL Regular Cab DRW 4x2 in Oxford White with available equipment. <sup>1</sup>Available feature. <sup>2</sup>Remember that even advanced technology cannot overcome the laws of physics. It's always possible to lose control of a vehicle due to inappropriate driver input for the conditions. <sup>3</sup>When properly equipped.



## FORTIFIED FOR ACTION.

Day or night, the all-new Super Duty® provides the tools you need to finish any job. Class-exclusive LED sideview mirror spotlights<sup>1</sup> can light your work site well into the night. They join quad-beam LED headlights<sup>1</sup> and LED tail lights.<sup>1</sup> LED box lighting<sup>2</sup> smartly illuminates the cargo box with forward-facing lights.

Our class-exclusive tailgate step<sup>1</sup> with grab handle is fully integrated inside the tailgate and drops down in one easy motion. First-in-class remote tailgate release<sup>1</sup> with power remote locking opens the tailgate with your key fob. Class-exclusive BoxLink™ with locking cleats<sup>1</sup> helps keep your cargo in place. Load dirt bikes, ATVs and equipment with ease thanks to class-exclusive stowable loading ramps.<sup>1</sup> When finished, stow the ramps with the BoxLink system.



<sup>1</sup>Available feature.

# ENLIGHTEN ANY ROAD.

You can in the all-new 2017 F-Series Super Duty,<sup>®</sup> the smartest Super Duty ever. It's loaded with driver-assist features.<sup>1</sup> Sophisticated radar.<sup>1</sup> And strategically placed cameras.<sup>1</sup> They're at your service to help you navigate a crowded job site, avoid a collision, stay in your lane, and so much more.

**First-in-class adaptive steering<sup>1</sup>** adapts to different driving conditions and reduces the amount of steering input needed, depending on speed and load. This helps make Super Duty more manageable to drive. Backing up, trailering, and parking lot manoeuvring will all be easier than with the previous generation.

**Trailer sway control** monitors the motions of the truck to detect trailer sway and selectively applies individual brakes as needed,<sup>2</sup> helping you maintain control of the truck and the trailer.

**Adaptive cruise control** helps maintain your choice of speed and preset gaps from the vehicle in front of you. It can also alert you to a potential collision. If one is detected, adaptive cruise control and collision warning with brake support<sup>1</sup> flashes a warning via a heads-up display on the windshield, sounds an alarm, and can pre-charge the brake system.

**Lane-keeping alert<sup>1,3</sup>** can detect lane markings and send vibration pulses to the steering wheel if it senses Super Duty drifting unintentionally out of its lane.

**BLIS<sup>®</sup> (Blind Spot Information System)** with trailer coverage<sup>4</sup> notifies you with a light in either sideview mirror if its radar sensors detect a vehicle in the corresponding blind spot. The system has been optimized for Super Duty to extend the range of BLIS to include a conventional trailer, once programmed into the productivity screen.

**F-450 PLATINUM Crew Cab 4x4 in White Platinum with available equipment.** Driver-assist features are supplemental and do not replace the driver's attention, judgment and need to control the vehicle. <sup>1</sup>Available feature. <sup>2</sup>Remember that even advanced technology cannot overcome the laws of physics. It's always possible to lose control of a vehicle due to inappropriate driver input for the conditions. <sup>3</sup>Lane-keeping alert does not control steering.

# POWERED FOR PRODUCTIVITY.

The 8" colour LCD productivity screen<sup>1</sup> in Super Duty<sup>®</sup> is your new command centre. Keep your most used screens front and centre with MyView. Just choose your favourites (up to 7) and put them in one consolidated view for greater convenience. Unique Super Duty screens include a digital turbo gauge for the diesel engine<sup>2</sup> and a DEF gauge.

The Individual Tire Pressure Monitoring System<sup>2</sup> not only notifies you if any individual tire's pressure is low, but the system tells you how low. Track towing information, such as trailer brake controller<sup>1</sup> settings, and profiles of up to 10 trailers – including accumulated kilometres on each. A class-exclusive Trailer Tire Pressure Monitoring System<sup>1</sup> can monitor and display the individual tire pressures of a connected trailer, and warn you if any tire is low. A power distribution screen when driving off road even shows you which wheels are receiving the most power. In Super Duty, all the info you need is front and centre.

PLATINUM Crew Cab 4x4 leather-trimmed interior in Brunello with available equipment. <sup>1</sup>Available feature. <sup>2</sup>F-250 and F-350 only. Excludes spare.





# SADDLE UP. RIDE LIKE A KING.

All-new Super Duty® cabs are longer across the lineup – Regular Cab, SuperCab and Crew Cab. On KING RANCH,™ you can massage your lower back and upper leg area, and change your seat contour, with the heated and cooled, leather-trimmed 10-way power front seats equipped with Active Motion.®<sup>1</sup> The driver's seat, power-adjustable pedals, power sideview mirrors, and power-tilt and -telescoping steering column all feature memory to make life even more convenient. On the leather-wrapped centre console lid, the KING RANCH Running W logo is prominently displayed.

Listen to your favourites all across Canada with SiriusXM.®<sup>1</sup> Your 6-month prepaid subscription gets you the best in audio entertainment including 100% commercial-free music from every genre, world-class news, sports, comedy and entertainment. Plus, listen anywhere online and on the SiriusXM app.<sup>2</sup>

**KING RANCH Crew Cab 4x4 leather-trimmed interior in Mesa Brown with available equipment.** <sup>1</sup>Available feature. <sup>2</sup>SiriusXM subscriptions sold after 6-month prepaid period expires. Subscriptions are governed by SiriusXM Customer Agreement; see [siriusxm.ca](http://siriusxm.ca). Data rates may apply.



# NOW YOU'RE TALKING.

## SYNC 3

In addition to all the voice-activated benefits of SYNC<sup>®1,2</sup> – placing and answering calls, and controlling music from your devices – you'll love the easy-to-use interface of SYNC 3.<sup>2</sup> An 8" colour LCD screen displays phone, audio and navigation<sup>4</sup> features. Enhanced voice recognition lets you give simple commands. A capacitive touchscreen includes a convenient swipe feature, as well as pinch-to-zoom functionality within navigation.<sup>4</sup> SYNC 3 also brings you the options of Apple CarPlay<sup>™3</sup> and Android Auto.<sup>™4</sup>

<sup>1</sup>Available feature. <sup>2</sup>Don't drive while distracted. Use voice-operated systems when possible; don't use handheld devices while driving. Some features may be locked out while the vehicle is in motion. Not all features are compatible with all phones. Message and data rates may apply. SYNC voice recognition and screens available in English, French and Spanish. <sup>3</sup>Requires phone with compatible version of Apple iOS and active data service. SYNC does not control Apple CarPlay while in use. Apple is solely responsible for their functionality. Message and data rates may apply. <sup>4</sup>Requires phone with compatible version of Android Auto and active data service. SYNC

## Voice-Activated Navigation System

Find your destination easily with help from the voice-activated Navigation System.<sup>4</sup> Zoom and scroll through interactive maps complete with available 3-D mapping and receive voice-guided turn-by-turn directions. Easy destination entry helps you locate your favourite restaurants, nearest ATM, closest fuel station and more.

## SYNC AppLink

Use your voice to control select compatible mobile apps, thanks to SYNC AppLink.<sup>™1,5</sup>

does not control Android Auto while in use. Google and other third parties are responsible for their respective functionality. Message and data rates may apply. <sup>5</sup>SYNC AppLink is compatible with select smartphone platforms and requires compatible apps to be installed and running on a capable smartphone while connected to SYNC. Commands may vary by phone and AppLink software. Message and data rates may apply. <sup>6</sup>Requires SYNC 3. <sup>7</sup>Optional Navigation System map updates cannot be received via Wi-Fi and require a separate update. Data rates may apply.

## Siri Seamless Integration

Bring the power of Siri<sup>®</sup> into Super Duty<sup>®</sup> with Siri Eyes Free,<sup>®</sup> your paired iPhone<sup>®</sup> and a long press of the voice recognition button on the steering wheel.

## Automatic Updates Over Wi-Fi

Keep SYNC 3 current with the latest software as new updates become available.<sup>7</sup> All you need is a Wi-Fi<sup>®</sup> connection.

# AN OPEN AND SHUT CASE ON PRODUCTIVITY.

Smart storage is everywhere in Super Duty.<sup>®</sup> Even under the rear seat. First, on Crew Cab models, deployable under-seat storage<sup>1</sup> can fold into the floor when not in use for a convenient flat load floor. When needed, the deployable partition raises up for convenient storage that can be divided and locked when the seat is down. Next, 2 glove compartments, including a unique upper compartment, provide more than double the glove box storage space of the previous generation. And the deep front centre console<sup>1</sup> is large enough for hanging file folders. Lastly, on SuperCab, enjoy rear doors that now open to 170° – with no B-pillars to obstruct entry and loading. Case closed.



# STANDARD FEATURES

## Mechanical

Axle – Front, narrow-track, monobeam (F-250/F-350 4x4)
Axle – Front, narrow-track, Twin-I-Beam (F-250/F-350 4x2)
Axle – Front, wide-track, monobeam (F-450)
Axle – Rear, limited-slip (DRW)
Axle – Rear, electronic-locking (SRW)
Brakes – Power 4-wheel disc with Anti-Lock Brake System (ABS)
Engine block heater
Jack – 2-ton mechanical (SRW)
Jack – 4-ton hydraulic (DRW)
Manual locking hubs (4x4)
Oil monitor – Intelligent Oil Life Monitor™ (diesel engine)
Oil monitor – Oil-life minder (gas engine)
Rapid-heat supplemental cab heater (diesel engine)
Spare wheel, tire, lock and frame-mounted carrier
Stabilizer bar – Front
Stabilizer bar – Rear (DRW)
Stationary Elevated Idle Control (SEIC) <sup>1</sup>
Steering – Hydraulic power-assisted
Steering damper
Suspension – Front, coil springs
Suspension – Heavy-duty gas shock absorbers
Suspension – Rear, leaf-spring
Trailer sway control
Trailer tow – 7-wire harness with relays and 7-/4-pin connector (F-250/F-350)
Trailer tow – 7-/4-pin connector, 4.30 limited-slip rear axle and 33,000-lb. GCWR (F-450)
Trailer tow – Built Ford Tough® trailer hitch receiver with 2.5" hitch and 2"-2.5" sleeve reducer (F-250 less F-250 Heavy-Duty Trailer Tow Package; F-350 SRW with gas engine; F-350 SRW 141.6," 148.0," 164.2" and 159.8" WB with diesel engine)
Trailer tow – Built Ford Tough trailer hitch receiver with 3" hitch and 2"-2.5" and 2.5"-3" sleeve reducers (F-250 with F-250 Heavy-Duty Trailer Tow Package; F-350 SRW 176.0" WB with diesel engine; DRW)

## Driver-Assist Technology

Automatic headlights with rainlight
Hill start assist

## Seating

Rear – 60/40 split flip-up seat with head restraints (SuperCab and Crew Cab)
--

## Interior

Cabin air filter
Climate control – Air conditioning
Coat hooks
Dash-top tray
Display – Outside temperature
Glove compartments – 2, illuminated and lockable
Grab handles – Driver and front-passenger, and rear-passenger on Crew Cab
Lighting – Dome light
Lighting – Dual map lights (front on Regular Cab/SuperCab; front and rear on Crew Cab)
Overhead console with dual storage bins (SuperCab/Crew Cab)
Power outlets – 12-volt powerpoint, 2 in instrument panel
Windows – Rear quarter flip-out (SuperCab)

## Exterior

Daytime running lights
Doors – 2 (Regular Cab)
Doors – 4 (SuperCab/Crew Cab)
Front fender vents
Front licence plate bracket
Lighting – 3-blink lane change signals
Lighting – Centre high-mounted stop light (CHMSL) with cargo light
Lighting – LED roof marker/clearance lights (DRW)
Pickup box – Box rail and tailgate mouldings
Pickup box – Partitionable and stackable
Pickup box – Tie-down hooks (4 with 6¾' box; 6 with 8' box)
Tailgate – Removable with key lock and tailgate assist
Tow hooks – Front, 2
Underhood service light
Windshield wipers – Variable-intermittent with washers

## Safety & Security

Airbags – Driver and right-front-passenger front <sup>2</sup>
Airbags – Front-seat side <sup>2</sup>
Airbags – Front-passenger airbag deactivation switch (Regular Cab and SuperCab)
Airbags – Safety Canopy® System with side-curtain airbags <sup>2</sup> and rollover sensor
AdvanceTrac® with RSC® (Roll Stability Control™)
Belt-Minder™ front safety belt reminder
Child-safety-seat top tether anchors (Regular Cab front passenger, and all rear-seat positions)
Front height-adjustable shoulder safety belts
Individual Tire Pressure Monitoring System (F-250/F-350, excludes spare)
MyKey®
SecuriLock® Passive Anti-Theft Engine Immobilizer System
SOS Post-Crash Alert System™

## Engines

	6.7L Power Stroke® V8 Turbo Diesel	6.2L 2-Valve Gas V8 FFV
Configuration	OHV (32-valve)	SOHC
Electronic fuel injection	High-pressure common-rail	Sequential multi-port
Induction system	Single-sequential turbocharger; charged air cooler	Specially tuned
Battery	Dual 12-volt; 750-CCA/78-amp-hr	Single 12-volt; 650-CCA/72-amp-hr (XL) Single 12-volt; 750-CCA/78-amp-hr (XLT/LARIAT/KING RANCH™/PLATINUM)
Alternator	Dual combined 377-amp	157-amp (XL/XLT); 200-amp (LARIAT/KING RANCH/PLATINUM); (240-amp, optional)
Cooling system	Pressurized series flow	Pressurized series flow
Cylinders	8, aluminum heads	8, aluminum heads
Block material	Compacted graphite iron	Cast iron
Valve operation	Push rod/rocker arms	Roller-rocker shafts
Camshaft drive	Gear	Silent chain
Bore/stroke	3.90"/4.25"	4.02"/3.74"
Compression ratio	16.2:1	9.8:1
Horsepower @ rpm	440 @ 2,800	385 @ 5,750 <sup>3</sup>
Torque lb.-ft. @ rpm	925 @ 1,800-2,000	430 @ 3,800
Recommended fuel	Ultra-low-sulfur diesel or B20 (containing 20% or less biodiesel)	Regular unleaded or E85; bi-fuel-capable CNG or propane autogas (requires upfit)

## Transmissions

	TorqShift® 6-Speed SelectShift® Automatic with Tow/Haul Mode (F-250 with diesel engine and F-350/F-450)	TorqShift-G 6-Speed SelectShift Automatic with Tow/Haul Mode (F-250 gas engine only)
<b>Case Material</b>	Aluminum	Aluminum
<b>PTO<sup>4</sup></b>	Live-drive with stationary and mobile modes; PTO port located on driver's side	n/a
<b>Gear Ratios</b>	1st 3.97:1 2nd 2.31:1 3rd 1.51:1 4th 1.14:1 5th 0.85:1 6th 0.67:1 Reverse 3.12:1	1st 4.17:1 2nd 2.34:1 3rd 1.52:1 4th 1.14:1 5th 0.87:1 6th 0.69:1 Reverse 3.40:1

## Mechanical

### Front Suspension

Axle (max. rating @ ground) – 5,250 lbs. (2,381 kg) (F-250/F-350 4x2); 5,600 lbs. (2,540 kg) (F-250/F-350 w/3.31 axle delete); 6,000 lbs. (2,722 kg) (F-250/F-350/F-450 4x4)  
Shock absorbers – 1.38" (35-mm) gas type

### Rear Suspension

Axle (max. rating @ ground) – 6,200 lbs. (2,812 kg) (F-250); 7,280 lbs. (3,302 kg) (F-350 SRW); 9,650 lbs. (4,377 kg) (F-350 DRW/F-450)  
Shock absorbers – 1.38" (35-mm) gas type

### Steering

Type – Hydraulic power-assisted with recirculating ball gear and damper  
Overall ratio – Variable

### Brakes

Rotor diameter (front/rear) – 14.29"/14.29" (363 mm/363 mm) (F-250/F-350); 15.39"/15.74" (391 mm/400 mm) (F-450)

### Wheels

Steel or aluminum  
Size – 17," 18" or 20" (F-250/F-350); 19.5" (F-450)  
Number of studs – 8 (F-250/F-350); 10 (F-450)  
Bolt-circle diameter – 6.69" (170-mm) SRW; 7.87" (200-mm) F-350 DRW; 8.86" (225-mm) F-450



**6 auxiliary upfitter switches<sup>4</sup>** are mounted overhead, within easy reach of front-seat occupants.

**Up to 6 power sources**, including 12-volt powerpoints<sup>4</sup> and 110-volt power outlets,<sup>4</sup> help you recharge your equipment easily. And the combined max. output of those outlets is increased to 400 watts in park and 300 watts when driving.

<sup>1</sup>Final-stage manufacturer must supply control switches. <sup>2</sup>Always wear your safety belt and follow airbag warning label instructions. <sup>3</sup>Certified to SAE J1349. <sup>4</sup>Available feature.

# TRIMS

S : Standard A : Available O : Optional

## XL



XL Regular Cab cloth-trimmed interior in Dark Earth Grey<sup>1</sup> with XL Value Package,<sup>1</sup> 40/20/40 split front seat and available equipment.

## XLT



XLT SuperCab cloth-trimmed interior in Medium Earth Grey with XLT Premium Package,<sup>1</sup> 40/console/40 front bucket seats<sup>1</sup> and available equipment.

## LARIAT



LARIAT Crew Cab leather-trimmed interior in Medium Light Camel with 40/console/40 front bucket seats<sup>1</sup> and available equipment.

## KING RANCH™

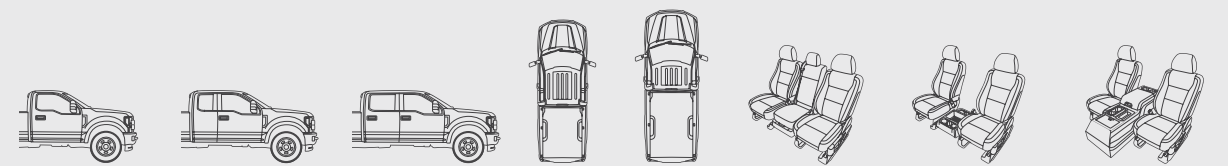


KING RANCH Crew Cab leather-trimmed interior in Mesa Brown with 40/console/40 front bucket seats and available equipment.

## PLATINUM



PLATINUM Crew Cab leather-trimmed interior in Black with 40/console/40 front bucket seats and available equipment.



	Regular Cab	SuperCab	Crew Cab	6 3/4' Box Size	8' Box Size	40/20/40 split front seat	40/mini-console/40 front bucket seats	40/console/40 front bucket seats
XL	A	A	A	A	A	S	O	
XLT	A	A	A	A	A	S		O
LARIAT		A	A	A	A	S		O
KING RANCH			S	A	A			S
PLATINUM			S	A	A			S

<sup>1</sup>Available feature.

# BUILD YOUR SUPER DUTY®

S : Standard O : Optional P : Package Content

XL	XLT	LARIAT	KING RANCH™	PLATINUM	
S	S	S	S	S	<b>Mechanical</b>
					6.2L SOHC 2-valve Gas V8 Flex Fuel E85-capable engine (n/a on F-450)
S/O	S/O	S/O	S/O	S/O	6.7L Power Stroke® V8 Turbo Diesel B20-capable engine with manual push-button engine-exhaust braking (standard on F-450)
S	S	S	S	S	TorqShift-G 6-speed SelectShift® automatic transmission with tow/haul mode (F-250 with gas engine)
S	S	S	S	S	TorqShift® 6-speed SelectShift automatic transmission with tow/haul mode (F-250 with diesel engine and F-350/F-450)
S	S	S	S	S	Axle – Rear, 3.55 limited-slip (F-350 DRW with diesel engine)
S	S	S	S	S	Axle – Rear, 3.73 limited-slip (F-350 DRW with gas engine)
O	O	O	O	O	Axle – Rear, 4.10 limited-slip (F-350 DRW with diesel engine)
S	S	S	S	S	Axle – Rear, 4.30 limited-slip (F-450)
O	O	O	O	O	Axle – Rear, 4.30 limited-slip (F-350 DRW with gas engine)
S	S	S	S	S	Axle – Rear, 3.31 electronic-locking¹ (SRW with diesel engine)
O	O	O	O	S	Axle – Rear, 3.55 electronic-locking¹ (SRW with diesel engine)
S	S	S	S	S	Axle – Rear, 3.73 electronic-locking (SRW with gas engine)
O	O	O	O	O	Axle – Rear, 4.30 electronic-locking (SRW with gas engine)
S	S				Alternator – 157-amp heavy-duty¹ (gas engine)
O	O	S	S	S	Alternator – 200-amp extra-heavy-duty¹ (gas engine)
O	O	O	O	O	Alternator – 240-amp extra-extra-heavy-duty¹ (gas engine)
S	S	S	S	S	Alternator – Dual extra-heavy-duty, 377-amp total¹ (diesel engine)
S					Battery – 650-CCA, 72-amp-hr, single (gas engine)
	S	S	S	S	Battery – 750-CCA, 78-amp-hr, single (gas engine)
S/O	S/O	S/O	S/O	S/O	Battery – 750-CCA, 78-amp-hr, dual (standard with diesel engine; optional with gas engine)
S	S	S	S	S	Drivetrain – 4x2 (F-250/F-350)
S/O	S/O	S/O	S/O	S	Drivetrain – 4x4 (standard on F-450; optional on F-250/F-350)
O	O				Engine idle shutdown – 5-minute¹
O	O				Engine idle shutdown – 10-minute¹
O	O				Engine idle shutdown – 15-minute¹
O	O				Engine idle shutdown – 20-minute¹
S	S	S	S	S	Fuel tank – 109-litre (142" and 148" WB with diesel engine)
S	S	S	S	S	Fuel tank – 128-litre (160" and 164" WB with diesel engine)
S	S	S	S	S	Fuel tank – 130-litre (142", 148", 160" and 164" WB with gas engine)
S	S	S	S	S	Fuel tank – 181-litre (176" WB with diesel engine)
S	S	S	S	S	Fuel tank – 184-litre (176" WB with gas engine)
O	O				Operator-commanded exhaust filter regeneration (diesel engine)
O	O	O	O	O	Power takeoff (PTO) provision with transmission-mounted live-drive and stationary modes¹
S/O	S/O	S	S	S	Spare wheel, tire, frame-mounted carrier and jack (optional with pickup box delete only)
O	O	O	O	O	Trailer tow – 5th-wheel hitch, 18,000-lb. (8,165-kg) rating¹,² (SRW)
O	O	O	O	O	Trailer tow – 5th-wheel hitch, 27,500-lb. (12,474-kg) rating¹,² (DRW)
O	O	O	O	O	Trailer tow – Gooseneck dual hitch kit includes one 2 5/16" gooseneck ball, one 3" gooseneck ball and two safety chain tie-down bars¹,² (F-450)
O	O	O	O	O	Trailer tow – Gooseneck hitch kit¹,² (F-250/F-350)
S/O	S	S	S	S	Trailer tow – Trailer brake controller with Smart Trailer Tow Connector (standard on DRW)
S					Transfer case – Manual (4x4)
O	S	S	S	S	Transfer case – Electronic shift-on-the-fly (ESOF) (4x4)

XL	XLT	LARIAT	KING RANCH	PLATINUM	
S					Wheels – 17" argent-painted steel with painted centre cap (SRW)
S	S				Wheels – 17" argent-painted steel without centre cap (F-350 DRW)
O	S				Wheels – 17" cast-aluminum with bright centre cap (SRW)
O	O	S	S	S	Wheels – 17" polished forged-aluminum with bright centre cap (F-350 DRW; KING RANCH includes unique centre cap)
O					Wheels – 18" argent-painted steel with painted centre cap (F-350 SRW)
O					Wheels – 18" cast-aluminum with bright centre cap (SRW)
		S	S		Wheels – 18" bright-machined cast-aluminum with bright centre cap (SRW; KING RANCH includes unique centre cap)
	P	P	P		Wheels – 18" chrome-like PVD with bright centre cap (SRW; KING RANCH includes unique centre cap)
S	S	S	S	S	Wheels – 19.5" polished forged-aluminum with bright centre cap (F-450; KING RANCH includes unique centre cap)
	O	O			Wheels – 20" premium cast-aluminum with bright centre cap (SRW 4x4)
	O	O			Wheels – 20" chrome-like PVD with bright centre cap¹ (SRW 4x4 with Chrome Package; KING RANCH includes unique centre cap)
					Wheels – 20" premium painted cast-aluminum with KING RANCH centre cap (SRW 4x4)
			S		Wheels – 20" polished aluminum (SRW)
			S		Wheels – 20" polished aluminum (F-350 SRW with diesel engine)
O	O				Wheels – Stainless steel covers, front and rear¹,³ (F-350 DRW)
S	S				LT245/75R17E BSW all-season (SRW 4x2)
S	S	S	S	S	LT245/75R17E BSW all-season (F-350 DRW 4x2)
S	S				LT245/75R17E BSW all-season plus (SRW 4x4)
S	S	S	S	S	LT245/75R17E BSW all-season plus (F-350 DRW 4x4)
O					LT245/75R17E BSW all-terrain¹ (SRW)
O	O	O	O	O	LT245/75R17E BSW all-terrain (F-350 DRW)
O	O	O	O	O	LT245/75R17E OWL all-terrain (F-350 DRW)
O	O				LT265/70R17E OWL all-terrain (SRW)
O	O	S	S		LT275/65R18E BSW all-season¹ (SRW)
O	O	O	O		LT275/70R18E BSW all-terrain plus¹ (SRW 4x4)
O	O	O	O		LT275/70R18E OWL all-terrain plus (SRW 4x4)
O	O				LT275/65R20E OWL all-season¹ (SRW 4x4)
O	O	O	S		LT275/65R20E OWL all-terrain¹ (SRW 4x4)
S	S	S	S	S	225/70R19.5G BSW all-season (F-450)
					<b>Driver-Assist Technology</b>
	O	O	O		Adaptive cruise control and collision warning with brake support¹
O	O	O	S	S	BLIS® (Blind Spot Information System) with trailer coverage and cross-traffic alert¹
	O	O	S	S	Reverse Sensing System¹
	O	O	S		Steering – Adaptive steering¹
O	S				SYNC® Voice Recognition Communications and Entertainment System with 4.2" centre stack screen, 911 Assist®, AppLink™ and 1 smart-charging USB port¹
	O	S	S	S	SYNC 3 Enhanced Voice Recognition Communications and Entertainment System with 8" colour LCD capacitive touchscreen in centre stack with swiping capability, 911 Assist, AppLink and 2 smart-charging USB ports¹
		P	S	S	Windshield wipers – Rain-sensing

XL	XLT	LARIAT	KING RANCH	PLATINUM	
					<b>Seating</b>
S					2-way adjustable driver and right-front-passenger head restraints
	S	S	S	S	4-way adjustable driver and right-front-passenger head restraints
S					Front – Heavy-duty vinyl 40/20/40 split seat with 2-way manual seat adjust, driver's side manual lumbar, and folding armrest with cupholders and storage
O					Front – Cloth 40/20/40 split seat with 2-way manual seat adjust, driver's side manual lumbar, and folding armrest with cupholders and storage
O					Front – Heavy-duty vinyl bucket seats with mini-console and driver's side manual lumbar
O					Front – Cloth bucket seats with mini-console and driver's side manual lumbar
	S				Front – Cloth 40/20/40 split seat, centre under-seat lockable storage with 12-volt powerpoint, 2-way manual seat adjust, driver's side manual lumbar, and folding armrest with cupholders and storage
	O				Front – Cloth bucket seats with 8-way power driver seat, 2-way manual passenger seat, driver's side manual lumbar, and flow-through centre console with lockable storage and 2 rear-facing powerpoints¹ (SuperCab and Crew Cab only)
		S			Front – Leather-trimmed heated and cooled 10-way power 40/20/40 split seat, centre under-seat lockable storage with 12-volt powerpoint, and folding armrest with cupholders and storage
		O	S	S	Front – Leather-trimmed heated and cooled 10-way power bucket seats and flow-through centre console with lockable storage and 2 rear-facing powerpoints
	O				Front – 8-way power driver seat¹
		S	S	S	Front – Driver's side memory
		P	S	S	Front – Easy-entry/-exit driver's seat feature
		P	S		Front – Multicontour seats with Active Motion®
S					Rear – Heavy-duty vinyl
O	S				Rear – Cloth
		S			Rear – Premium vinyl (SuperCab)
		S	S	S	Rear – Leather-trimmed (Crew Cab)
		S	S	S	Rear – Under-seat fold-flat storage, lockable and partitionable, with 12-volt powerpoint (Crew Cab)
	S	S			Rear – Under-seat storage with 12-volt powerpoint (SuperCab)
		S	S	S	Rear – Fold-down centre armrest with dual integrated cupholders (Crew Cab)
		O	S	S	Rear – Heated outboard seats¹ (Crew Cab)
					<b>Interior</b>
S					AM/FM stereo with 4 speakers (Regular Cab)
S					AM/FM stereo with 6 speakers (SuperCab/Crew Cab)
O	S				AM/FM stereo/single-CD player with MP3 capability and 4 speakers (Regular Cab)
O	S				AM/FM stereo/single-CD player with MP3 capability and 6 speakers (SuperCab/Crew Cab)
		S	S	S	Audio System from Sony® with AM/FM stereo/single-CD player with MP3 capability and 10 speakers
	O	O	S	S	Voice-activated Navigation System¹
	S	S	S	S	SiriusXM® with 6-month prepaid subscription¹
	O				Radio delete
	S	S	S	S	Accessory delay for power features
		P	S	S	Ambient lighting

XL	XLT	LARIAT	KING RANCH	PLATINUM	
O					Centre console – Mini-console
	O	O			Centre console – Flow-through with vinyl lid
			S	S	Centre console – Flow-through with leather-wrapped lid
	O	O	O	O	Centre console – Vehicle Safe by Console Vault³
O					Climate control – Air conditioning delete
S	S				Climate control – Single-zone manual
		S	S	S	Climate control – Dual-zone electronic automatic temperature control
O	S	S	S	S	Cruise control
S					Display – 2.3" productivity screen in instrument cluster
O	S				Display – 4.2" LCD productivity screen in instrument cluster¹
		S	S	S	Display – 8" configurable colour LCD productivity screen in instrument cluster
			S		Door-sill scuff plates – Illuminated
			S		Door trim – Sandalwood film appliqués
			S		Door trim – Khaya wood appliqués
			S		Door trim – Figured Eucalyptus wood appliqués
	O	O	O	O	Flooring – All-weather floor mats¹ (includes carpeted floor mats)
S	O	O			Flooring – Black vinyl/carpet delete
S	S	S	S	S	Flooring – Carpet with front and rear carpeted floor mats¹
		O	O		Flooring – Premium vinyl with front and rear carpeted floor mats
		P	S	S	Locks – Intelligent Access with push-button start
S					Locks – Manual door and tailgate
	S	S	S	S	Locks – Power door and tailgate with autolock/unlock
	S	S			Locks – Remote Keyless Entry System with 2 integrated key transmitter remotes
S	S				Mirror – Day/night rearview
		S	S	S	Mirror – Auto-dimming rearview
	O				Power-adjustable pedals
		S	S	S	Power-adjustable pedals with memory
O	O	S	S	S	Power outlet – 110-volt/400-watt, 1 in instrument panel; also includes 1 rear-facing on the flow-through centre console, if equipped¹
S	S				Steering column – Manual-tilt/-telescoping
S	S		P	S	Steering column – Power-tilt/-telescoping with memory
S	S				Steering wheel – Black urethane
		S	S	S	Steering wheel – Colour-coordinated leather-wrapped
		P	S	S	Steering wheel – Heated
		S	S	S	Universal garage door opener
O	O	O	O	O	Upfitter switches – 6, located in overhead console¹
S					Visors – Adjustable driver with pocket and front-passenger with mirror
	S				Visors – Adjustable driver and front-passenger with covered mirrors
		S	S	S	Visors – Adjustable driver and front-passenger with covered and illuminated vanity mirrors
S	S				Window – Rear, fixed
O	O				Window – Rear, fixed with defroster and privacy glass
O	O	S	S	S	Window – Rear, power-sliding with defroster and privacy glass¹
S					Windows – Manual front and rear
	S	S	S	S	Windows – Power with front one-touch-up/-down feature

¹Restrictions may apply. See your Ford of Canada Dealer for details. ²Requires 5th-Wheel/Gooseneck Trailer Tow Prep Package. Hitch rating may differ from truck capability. ³Ford Licensed Accessory. See your Ford of Canada Dealer for limited warranty details.

# BUILD YOUR SUPER DUTY®

S : Standard O : Optional P : Package Content

XL	XLT	LARIAT	KING RANCH™	PLATINUM	
<b>O</b>	<b>O</b>	<b>O</b>	<b>O</b>	<b>O</b>	<b>Exterior</b>
<b>O</b>	<b>O</b>	<b>O</b>	<b>O</b>	<b>O</b>	Bedliner – Plastic drop-in <sup>1</sup>
<b>O</b>	<b>O</b>	<b>O</b>	<b>O</b>	<b>O</b>	Bedliner – Tough Bed® spray-in bedliner with tailgate guard <sup>1</sup>
<b>S</b>	<b>S</b>	<b>S</b>	<b>S</b>	<b>S</b>	Beltline mouldings – Black
			<b>S</b>	<b>S</b>	Beltline mouldings – Bright
<b>O</b>	<b>S</b>	<b>S</b>	<b>S</b>	<b>S</b>	BoxLink™ with 4 premium locking cleats
<b>S</b>					Bumpers – Black-painted steel
<b>P</b>	<b>S</b>	<b>S</b>	<b>P</b>		Bumpers – Chrome
			<b>S</b>		Bumpers – Caribou-painted steel
			<b>S</b>		Bumpers – Body-colour-painted steel
<b>S</b> <sub>0</sub>	<b>S</b> <sub>0</sub>				Cab steps – Black platform running boards (standard on DRW; optional on SRW)
<b>O</b>	<b>O</b>	<b>S</b>			Cab steps – 5" chrome tubular step bars <sup>1</sup>
<b>O</b>	<b>O</b>	<b>O</b>	<b>O</b>		Cab steps – Extended 6" chrome angular step bars <sup>1</sup>
		<b>S</b>			Cab steps – Caribou platform running boards with lights
		<b>O</b>	<b>O</b>	<b>S</b>	Cab steps – Power-deployable running boards <sup>1</sup>
<b>O</b>	<b>O</b>	<b>O</b>	<b>O</b>	<b>O</b>	Camera – Rear CHMSL camera with LED CHMSL, rear view camera and centre stack display <sup>1</sup>
<b>O</b>	<b>S</b>	<b>S</b>	<b>S</b>	<b>S</b>	Camera – Rear view camera <sup>1</sup>
<b>O</b>					Camera – Rear View Camera and Prep Kit (optional with pickup box delete only)
<b>O</b>	<b>O</b>	<b>O</b>	<b>O</b>	<b>O</b>	Camera – Customer-Placed Trailer Camera <sup>1,2</sup>
<b>O</b>	<b>O</b>	<b>O</b>	<b>O</b>	<b>O</b>	Camera – Customer-Placed Trailer Camera, and Individual Trailer Tire Pressure Monitoring System (TPMS) <sup>1,2</sup>
<b>O</b>	<b>O</b>	<b>O</b>	<b>O</b>	<b>O</b>	Camera – Ultimate Trailer Tow Camera System (includes rear view camera, trailer hook-up light, 360-degree camera system, rear CHMSL camera, Trailer Reverse Guidance and LED CHMSL) <sup>1</sup>
<b>S</b>	<b>S</b>				Door handles – Black
		<b>S</b>	<b>S</b>		Door handles – Body-colour
<b>P</b>	<b>P</b>	<b>P</b>	<b>S</b>		Door handles – Chrome
<b>P</b>	<b>P</b>	<b>P</b>	<b>S</b>		Exhaust tip – Chrome
<b>O</b>	<b>O</b>	<b>S</b>	<b>S</b>	<b>S</b>	Foglights
<b>O</b>	<b>O</b>	<b>O</b>	<b>O</b>	<b>O</b>	Ford Telematics™ powered by Telogis® <sup>3</sup> – Fleet-tracking system (includes 1 year of service)
<b>S</b>					Glass – Solar-tint
	<b>S</b>	<b>S</b>	<b>S</b>	<b>S</b>	Glass – Privacy-tint on rear doors and rear window, solar-tint on windshield and front doors <sup>1</sup>
<b>S</b>					Grille – Black
	<b>S</b>				Grille – Chrome 2-bar insert with Carbon Black surround
		<b>S</b>			Grille – Chrome 2-bar insert with chrome surround
			<b>S</b>		Grille – Chrome main bars with Caribou secondary bars
			<b>S</b>		Grille – Satin-aluminum main bars with chrome secondary bars
<b>S</b>	<b>S</b>	<b>S</b>			Headlights – Dual-beam jewel-effect halogen
		<b>O</b>	<b>S</b>	<b>S</b>	Headlights – Quad-beam LED with LED tail lights, foglights and CHMSL <sup>1</sup>
<b>O</b>	<b>O</b>				Lighting – Amber LED warning strobes with CHMSL light bar and 2 hood-mounted lights by SoundOff Signal® <sup>1,3</sup>
<b>O</b>	<b>O</b>	<b>S</b>	<b>S</b>	<b>S</b>	Lighting – LED box lighting with LED CHMSL
<b>O</b>	<b>O</b>	<b>O</b>	<b>O</b>	<b>O</b>	Lighting – LED roof marker/clearance lights (SRW)
		<b>S</b>	<b>S</b>	<b>S</b>	Lighting – Trailer hook-up light <sup>1</sup>

XL	XLT	LARIAT	KING RANCH	PLATINUM	
			<b>O</b>	<b>S</b>	Lower-accent two-tone paint (includes accent-colour wheel-lip mouldings on SRW)
		<b>S</b>			Mirrors – Manually telescoping trailer tow with 2-way fold and manual glass
	<b>P</b>	<b>S</b>			Mirrors – Manually telescoping trailer tow with 2-way fold, power/heated glass, heated manual spotter mirrors, and integrated clearance lights and turn signal indicators
		<b>O</b>	<b>S</b>	<b>S</b>	Mirrors – PowerScope® power-telescoping/-folding trailer tow with power/heated glass, heated manual spotter mirrors, integrated clearance lights, turn signal indicators, high-intensity LED security approach lights, and Utility Lighting System
			<b>S</b>	<b>S</b>	Mirrors – Memory feature for sideview mirrors
	<b>S</b>	<b>S</b>			Mirrors – Black sideview mirror caps
		<b>S</b>	<b>S</b>		Mirrors – Body-colour sideview mirror caps
	<b>P</b>	<b>P</b>	<b>P</b>	<b>S</b>	Mirrors – Chrome sideview mirror caps
	<b>O</b>	<b>O</b>			Moonroof – Power, single-panel (SuperCab)
	<b>O</b>	<b>O</b>	<b>O</b>	<b>O</b>	Moonroof – Power, twin-panel <sup>1</sup> (Crew Cab)
	<b>S</b>	<b>S</b>	<b>S</b>	<b>S</b>	Pickup box – Tie-down hooks, Carbon Black
	<b>P</b>	<b>P</b>	<b>P</b>	<b>S</b>	Pickup box – Tie-down hooks, Chrome
	<b>O</b>	<b>O</b>	<b>S</b>	<b>S</b>	Remote Start System <sup>1</sup>
	<b>P</b>	<b>S</b>	<b>S</b>	<b>S</b>	SecuriCode™ keyless entry keypad
	<b>O</b>	<b>O</b>	<b>O</b>	<b>O</b>	Skid plates – Transfer case and fuel tank (4x4)
	<b>O</b>	<b>O</b>	<b>O</b>	<b>O</b>	Splash guards – Front <sup>1</sup> (F-250/F-350)
	<b>O</b>	<b>O</b>	<b>O</b>	<b>O</b>	Splash guards – Rear <sup>1</sup> (SRW)
	<b>O</b>	<b>O</b>	<b>O</b>	<b>O</b>	Stowable bed extender (SRW)
	<b>O</b>	<b>O</b>	<b>O</b>	<b>O</b>	Stowable loading ramps <sup>1</sup>
		<b>P</b>	<b>S</b>	<b>S</b>	Tailgate – Remote release
	<b>O</b>	<b>O</b>	<b>O</b>	<b>S</b>	Tailgate – Tailgate step with step, grab bar and tailgate lift assist
	<b>S</b>	<b>S</b>			Tailgate handle – Black
	<b>P</b>	<b>S</b>	<b>S</b>	<b>S</b>	Tailgate handle – Chrome
	<b>O</b>	<b>O</b>	<b>O</b>	<b>O</b>	Tool/Cargo Box by Delta® <sup>1,3</sup>
	<b>S</b>	<b>S</b>	<b>S</b>	<b>S</b>	Tow hooks – Black
	<b>P</b>	<b>P</b>	<b>P</b>	<b>S</b>	Tow hooks – Chrome
			<b>P</b>	<b>S</b>	Wheel-lip mouldings – Accent-colour
	<b>O</b>	<b>O</b>	<b>O</b>		Wheel-well liners – Rear <sup>1</sup> (SRW)
					<b>Safety &amp; Security</b>
<b>O</b>	<b>O</b>	<b>S</b>	<b>S</b>	<b>S</b>	Advanced Security Pack with inclination/intrusion sensors
			<b>S</b>	<b>S</b>	Headlights – Auto high beams <sup>1</sup>
<b>O</b>	<b>O</b>	<b>O</b>	<b>O</b>	<b>O</b>	Inflatable rear safety belts in outboard seating positions <sup>1</sup> (Crew Cab)
	<b>S</b>	<b>S</b>	<b>S</b>	<b>S</b>	Perimeter alarm

XL	XLT	LARIAT	KING RANCH	PLATINUM	
	<b>O</b>				<b>Packages</b>
<b>O</b>					<b>XL Decor Package</b> includes chrome bumpers and 17" argent-painted steel wheels with bright centre ornaments (SRW only)
<b>O</b>					<b>XL Value Package</b> <sup>1</sup> includes a 4.2" centre stack screen, AM/FM stereo/single-CD player with MP3 capability, cruise control, bright centre caps on wheels (SRW only), and chrome front and rear bumpers
<b>O</b>	<b>O</b>				<b>Pickup box delete</b> <sup>1</sup> (F-250/F-350 with 8' box only) deletes pickup box, tailgate, rear bumper, 7/-4-pin connector, CHMSL with cargo light, jack, and spare wheel, tire, lock and carrier
<b>O</b>	<b>O</b>				<b>Heavy-Service Front Suspension Package</b> for pickup box delete <sup>1</sup> (F-250 and F-350 SRW with pickup box delete) includes front springs upgrade (unless maximum springs have been computer-selected as included equipment), rear auxiliary springs (F-250), and rear stabilizer bar
	<b>O</b>				<b>XLT Value Package</b> <sup>1</sup> includes autolock/unlock, foglights, power-adjustable pedals, 8-way power driver's seat (SuperCab/Crew Cab only), Reverse Sensing System, and SecuriCode keyless entry keypad
	<b>O</b>				<b>XLT Premium Package</b> <sup>1</sup> (SuperCab/Crew Cab) includes 4.2" LCD productivity screen in instrument cluster; SYNC® 3 Enhanced Voice Recognition Communications and Entertainment System with 8" colour LCD capacitive touchscreen in centre stack with swiping capability, 911 Assist® AppLink™ and 2 smart-charging USB ports; 6" chrome angular step bars; 18" chrome-like PVD wheels (SRW only); autolock/unlock; chrome exhaust tip; chrome pickup bed tie-down hooks; chrome door and tailgate handles; chrome tow hooks; foglights; power-adjustable pedals; 8-way power driver's seat with heat; 2-way manual passenger seat with heat; Reverse Sensing System; SecuriCode keyless entry keypad; and chrome mirror caps
		<b>O</b>			<b>LARIAT Ultimate Package</b> <sup>1</sup> (Crew Cab only) includes adaptive steering, lane-keeping alert, Driver Alert System, ambient lighting, auto high beams, rain-sensing windshield wipers, easy-entry/-exit driver's seat with memory, twin-panel moonroof, Intelligent Access with push-button start, heated steering wheel, power-tilt/-telescoping steering column with memory, Remote Start System, remote tailgate release, tailgate step, and voice-activated Navigation System
		<b>O</b>	<b>O</b>		<b>Chrome Package</b> <sup>1</sup> includes 6" chrome angular step bars, 18" chrome-like PVD wheels (SRW only), chrome door handles, chrome pickup bed tie-down hooks, chrome exhaust tip, chrome tow hooks, and chrome mirror caps; KING RANCH also includes chrome front and rear bumpers and chrome tailgate appliqué

XL	XLT	LARIAT	KING RANCH	PLATINUM	
			<b>O</b>	<b>O</b>	<b>KING RANCH Monochromatic Paint Package</b> <sup>1</sup> includes monochromatic paint; deletes Caribou wheel-lip mouldings on SRW; requires Chrome Package
			<b>O</b>	<b>O</b>	<b>KING RANCH Ultimate Package</b> includes adaptive cruise control and collision warning with brake support, adaptive steering, lane-keeping alert, Driver Alert System, Ultimate Trailer Tow Camera System, twin-panel moonroof, tailgate step, and multicontour front seats with Active Motion®
			<b>O</b>	<b>O</b>	<b>PLATINUM Ultimate Package</b> includes adaptive cruise control and collision warning with brake support, lane-keeping alert, Driver Alert System, twin-panel moonroof, and Ultimate Trailer Tow Camera System
<b>O</b>	<b>O</b>	<b>O</b>	<b>O</b>	<b>O</b>	<b>9,900-lb. (4,491-kg) GVWR Package</b> <sup>1</sup> (F-350 SRW)
<b>O</b>	<b>O</b>	<b>O</b>	<b>O</b>	<b>O</b>	<b>10,000-lb. (4,536-kg) GVWR Package</b> <sup>1</sup> (F-250)
<b>O</b>	<b>O</b>	<b>O</b>	<b>O</b>	<b>O</b>	<b>11,400-lb. (5,171-kg) GVWR Package</b> <sup>1</sup> (F-350 SRW)
<b>O</b>	<b>O</b>	<b>O</b>	<b>O</b>	<b>O</b>	<b>5th-Wheel/Gooseneck Trailer Tow Prep Package</b> <sup>1</sup> (4x4 only) includes 1 under-bed frame crossmember, 5 pickup bed 5th-wheel/gooseneck attachment points and close-out plugs, and an integrated 7-pin connector on the driver's side pickup bed wall
<b>O</b>	<b>O</b>	<b>O</b>	<b>O</b>	<b>O</b>	<b>Camper Package</b> <sup>1</sup> includes front springs upgrade (unless maximum springs have been computer-selected as included equipment), rear stabilizer bar (SRW), and auxiliary rear springs (F-250)
<b>O</b>	<b>O</b>	<b>O</b>	<b>O</b>	<b>O</b>	<b>CNG/Propane Gaseous Engine Prep Package</b> <sup>4</sup> (F-250/F-350 gas engine only) includes hardened engine intake valves and valve seats and bi-fuel manifold
<b>O</b>	<b>O</b>	<b>O</b>	<b>O</b>	<b>O</b>	<b>F-250 High-Capacity Trailer Tow Package</b> <sup>1</sup> (F-250 with 8' box and diesel engine only) includes max. front springs, upgraded axles and 27,500-lb. (12,474-kg) GCWR
<b>O</b>	<b>O</b>	<b>O</b>	<b>O</b>	<b>O</b>	<b>FX4 Off-Road Package</b> <sup>1</sup> (4x4 only) includes Hill Descent Control™, Rancho® front and rear shocks, transfer case and fuel tank skid plates, and FX4 Off-Road box decals (box decals not included on PLATINUM)
<b>O</b>	<b>O</b>	<b>O</b>	<b>O</b>	<b>O</b>	<b>Heavy-Service Front Suspension Package</b> <sup>1</sup> includes front springs upgrade (unless maximum springs have been computer-selected as included equipment)
<b>O</b>	<b>O</b>	<b>O</b>	<b>O</b>	<b>O</b>	<b>Snow Plow Prep Package</b> <sup>1</sup> (4x4 only) includes computer-selected springs for snow plow application, and extra-heavy-duty alternator
<b>O</b>	<b>O</b>	<b>O</b>	<b>O</b>	<b>O</b>	<b>Snow Plow/Camper Package</b> <sup>1</sup> includes computer-selected front springs for snow plow application, extra-heavy-duty alternator, rear stabilizer bar (SRW), and auxiliary rear springs (F-250)

<sup>1</sup>Restrictions may apply. See your Ford of Canada Dealer for details. <sup>2</sup>Installation not included. <sup>3</sup>Ford Licensed Accessory. See your Ford of Canada Dealer for limited warranty details.

<sup>4</sup>Available feature. Vehicle will be equipped with the standard factory gasoline fuel system. This package does not include CNG/propane fuel tanks and lines, which are supplied, installed and warranted by an authorized CNG/propane Qualified Vehicle Modifier (QVM).

Android Auto, Google, Google Play and other marks are trademarks of Google Inc. Apple, Apple CarPlay, iPhone and Siri are trademarks of Apple Inc., registered in the U.S. and other countries. King Ranch is a trademark of King Ranch, Inc. Rancho is a registered trademark of Tenneco Automotive Operating Company Inc. "SiriusXM," the SiriusXM logo, channel names and logos are trademarks of SiriusXM Radio Inc. and are used under licence. Sony is a registered trademark of the Sony Corporation. Wi-Fi® is a registered trademark of the Wi-Fi Alliance®. All other trademarks, service marks, images and logos are property of their respective owners and are displayed in this publication with permission. All rights reserved.

Comparisons based on competitive models (class is Full-Size Pickups over 8,500 lbs. [3,856 kg] GVWR based on Ford segmentation), publicly available information and Ford certification data at the time of printing. Some features discussed may be optional. Vehicles may be shown with optional and aftermarket upfit equipment. Features may be offered only in combination with other options or subject to additional ordering requirements or limitations. Dimensions and capability ratings shown may vary due to optional features and/or production variability. Information is provided on an "as is" basis and could include technical, typographical or other errors. Ford Motor Company of Canada, Limited, makes no warranties, representations, or guarantees of any kind, express or implied, including but not limited to, accuracy, currency, or completeness, the operation of the information, materials, content, availability, and products. Your Ford of Canada Dealer is your best source for up-to-date information. Ford Motor Company of Canada, Limited, reserves the right to change product specifications, pricing and equipment at any time without incurring obligations. Body Manufacturers are responsible for compliance certification of the completed vehicle. The Ford New Truck Limited Warranty and any government certification made by Ford shall cover only the vehicle as manufactured by Ford and shall not extend to any addition, modification or change of or to the vehicle by the final-stage manufacturer.

# WHEELS



17" Argent-Painted Steel  
with Painted Centre Cap  
Standard: F-250/F-350 SRW XL



18" Argent-Painted Steel  
with Painted Centre Cap  
Optional: F-350 SRW XL



17" Cast-Aluminum  
with Bright Centre Cap  
Optional: F-250/F-350 SRW XL  
Standard: F-250/F-350 SRW XLT



18" Cast-Aluminum  
with Bright Centre Cap  
Optional: F-250/F-350 SRW XLT



18" Chrome-Like PVD  
with Bright Centre Cap  
Included: F-250/F-350 SRW XLT  
with XLT Premium Package & LARIAT  
with Chrome Package



18" Bright-Machined Cast-Aluminum  
with Bright Centre Cap  
Standard: F-250/F-350 SRW LARIAT



20" Premium Cast-Aluminum  
with Bright Centre Cap  
Optional: F-250/F-350 SRW 4x4  
XLT & LARIAT



20" Chrome-Like PVD  
with Bright Centre Cap  
Optional: F-250/F-350 SRW 4x4  
LARIAT with Chrome Package<sup>1</sup>



20" Chrome-Like PVD  
with Bright Centre Cap  
Optional: F-250/F-350 SRW 4x4  
LARIAT Diesel with Chrome Package



18" Bright-Machined Cast-Aluminum  
with KING RANCH Centre Cap  
Standard: F-250/F-350 SRW  
KING RANCH



18" Chrome-Like PVD  
with KING RANCH Centre Cap  
Included: F-250/F-350 SRW  
KING RANCH with Chrome Package



20" Premium Painted Cast-Aluminum  
with KING RANCH Centre Cap  
Optional: F-250/F-350 SRW 4x4  
KING RANCH



20" Chrome-Like PVD  
with KING RANCH™ Centre Cap  
Optional: F-250/F-350 SRW 4x4  
KING RANCH with Chrome Package<sup>1</sup>



20" Chrome-Like PVD  
with KING RANCH Centre Cap  
Optional: F-250/F-350 SRW 4x4 Diesel  
KING RANCH with Chrome Package



20" Polished Aluminum  
with Bright Centre Cap  
Standard: F-250/F-350 SRW PLATINUM



20" Polished Aluminum  
with Bright Centre Cap  
Standard: F-350 SRW Diesel PLATINUM



17" Argent-Painted Steel  
Standard: F-350 DRW XL & XLT



17" Argent-Painted Steel  
with Stainless Steel Covers  
Optional: F-350 DRW XL & XLT



17" Polished Forged-Aluminum  
with Bright Centre Cap  
Optional: F-350 DRW XL & XLT  
Standard: F-350 DRW LARIAT  
& PLATINUM



17" Polished Forged-Aluminum  
with KING RANCH Centre Cap  
Standard: F-350 DRW KING RANCH



19.5" Polished Forged-Aluminum  
with Bright Centre Cap  
Standard: F-450 XL, XLT,  
LARIAT & PLATINUM



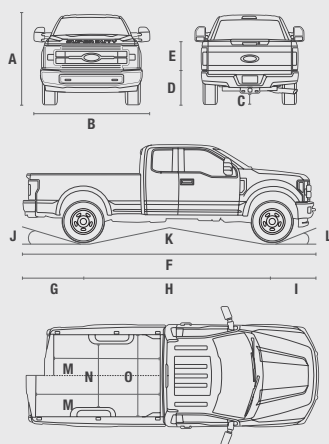
19.5" Polished Forged-Aluminum  
with KING RANCH Centre Cap  
Standard: F-450 KING RANCH

<sup>1</sup>Restrictions may apply. See your Ford of Canada Dealer for details.

# TECHNICAL SPECIFICATIONS

## Dimensions

	Regular Cab LWB 4x2/4x4	SuperCab SWB 4x2/4x4	LWB 4x2/4x4	Crew Cab SWB 4x2/4x4	LWB 4x2/4x4
<b>Exterior in. (mm)</b>					
<b>A. Height – F-250 SRW (w/o options)</b>	77.9/81.1 (1,978/2,069)	78.4/81.5 (1,991/2,069)	78.1/81.4 (1,983/2,068)	78.3/81.5 (1,990/2,070)	78.0/81.3 (1,982/2,065)
<b>A. Height – F-350 SRW (w/o options)</b>	77.8/80.9 (1,976/2,056)	78.2/81.3 (1,983/2,068)	78.0/81.2 (1,981/2,063)	78.2/81.3 (1,986/2,065)	78.0/81.1 (1,980/2,060)
<b>A. Height – F-350 DRW (w/o options)</b>	78.1/80.6 (1,985/2,048)	—	77.8/80.9 (1,977/2,055)	—	77.9/81.0 (1,979/2,057)
<b>A. Height – F-450 DRW (w/o options)</b>	—	—	—	—	81.0 (2,057)
<b>B. Width – SRW (excl. mirrors)</b>	80.0 (2,031)	80.0 (2,031)	80.0 (2,031)	80.0 (2,031)	80.0 (2,031)
<b>B. Width – DRW (excl. mirrors)</b>	96.0 (2,438)	—	96.0 (2,438)	—	96.0 (2,438)
<b>B. Width – With mirrors</b>	105.9 (2,689)	105.9 (2,689)	105.9 (2,689)	105.9 (2,689)	105.9 (2,689)
<b>B. Width – With mirrors extended</b>	110.0 (2,794)	110.0 (2,794)	110.0 (2,794)	110.0 (2,794)	110.0 (2,794)
<b>C. Ground clearance – F-250 SRW</b>	8.5/8.3 (217/210)	8.5/8.2 (217/209)	8.5/8.2 (217/209)	8.5/8.2 (217/209)	8.5/8.2 (217/209)
<b>C. Ground clearance – F-350 SRW</b>	8.5/8.2 (217/209)	8.5/8.2 (217/209)	8.5/8.2 (217/209)	8.5/8.2 (217/209)	8.5/8.2 (217/209)
<b>C. Ground clearance – F-350 DRW</b>	7.8/7.7 (197/195)	—	7.8/7.8 (197/197)	—	7.8/7.8 (197/197)
<b>C. Ground clearance – F-450 DRW</b>	—	—	—	—	8.3 (210)
<b>D. Load floor height – F-250 SRW</b>	36.1/38.7 (918/984)	35.6/38.3 (905/974)	35.3/38.1 (900/969)	35.3/38.1 (897/969)	34.8/37.9 (888/965)
<b>D. Load floor height – F-350 SRW</b>	35.7/38.5 (908/978)	35.4/38.1 (897/969)	35.0/37.9 (889/963)	35.0/38.0 (883/962)	34.6/37.6 (880/955)
<b>D. Load floor height – F-350 DRW</b>	36.5/37.6 (928/956)	—	34.4/37.2 (875/946)	—	34.3/36.9 (870/936)
<b>D. Load floor height – F-450 DRW</b>	—	—	—	—	36.9 (937)
<b>E. Cargo box height</b>	21.1 (535)	21.1 (535)	21.1 (535)	21.1 (535)	21.1 (535)
<b>F. Length</b>	231.8 (5,888)	238.2 (6,051)	254.4 (6,462)	250.0 (6,351)	266.2 (6,762)
<b>G. Overhang – Rear</b>	52.0 (1,321)	52.0 (1,321)	52.0 (1,321)	52.0 (1,321)	52.0 (1,321)
<b>H. Wheelbase</b>	141.6 (3,596)	148.0 (3,759)	164.2 (4,170)	159.8 (4,059)	176.0 (4,470)
<b>I. Overhang – Front</b>	38.2 (971)	38.2 (971)	38.2 (971)	38.2 (971)	38.2 (971)
<b>J. Angle of departure – F-250 SRW</b>	19.8°/22.7°	19.3°/22.3°	19.0°/22.1°	19.0°/22.1°	18.4°/21.8°
<b>J. Angle of departure – F-350 SRW</b>	18.7°/21.8°	18.4°/21.4°	18.0°/21.2°	17.9°/21.2°	17.6°/20.9°
<b>J. Angle of departure – F-350 DRW</b>	19.5°/20.9°	—	17.4°/20.5°	—	17.2°/20.1°
<b>J. Angle of departure – F-450 DRW</b>	—	—	—	—	20.2°
<b>K. Ramp breakover angle – F-250 SRW</b>	20.2°/25.4°	19.3°/24.2°	17.8°/22.5°	18.0°/22.6°	16.9°/21.1°
<b>K. Ramp breakover angle – F-350 SRW</b>	20.0°/25.1°	19.0°/23.9°	17.7°/22.3°	17.8°/22.4°	16.7°/20.9°
<b>K. Ramp breakover angle – F-350 DRW</b>	20.6°/24.6°	—	17.4°/21.8°	—	16.7°/20.8°
<b>K. Ramp breakover angle – F-450 DRW</b>	—	—	—	—	19.6°
<b>L. Angle of approach – F-250 SRW</b>	17.2°/18.1°	17.6°/17.9°	17.8°/18.7°	17.4°/17.9°	18.1°/18.4°
<b>L. Angle of approach – F-350 SRW</b>	17.5°/17.8°	17.3°/17.7°	18.0°/18.4°	17.6°/17.5°	17.9°/18.1°
<b>L. Angle of approach – F-350 DRW</b>	17.6°/18.1°	—	18.3°/18.4°	—	18.5°/19.1°
<b>L. Angle of approach – F-450 DRW</b>	—	—	—	—	18.9°
<b>Interior</b>					
Front head room	40.8 (1,037)	40.8 (1,037)	40.8 (1,037)	40.8 (1,037)	40.8 (1,037)
Front leg room (max.)	43.9 (1,115)	43.9 (1,115)	43.9 (1,115)	43.9 (1,115)	43.9 (1,115)
Front hip room	62.5 (1,588)	62.5 (1,588)	62.5 (1,588)	62.5 (1,588)	62.5 (1,588)
Front shoulder room	66.7 (1,694)	66.7 (1,694)	66.7 (1,694)	66.7 (1,694)	66.7 (1,694)
Rear head room	—	40.3 (1,023)	40.3 (1,023)	40.4 (1,026)	40.4 (1,026)
Rear leg room	—	33.5 (851)	33.5 (851)	43.6 (1,108)	43.6 (1,108)
Rear hip room	—	64.7 (1,644)	64.7 (1,644)	64.7 (1,644)	64.7 (1,644)
Rear shoulder room	—	65.8 (1,671)	65.8 (1,671)	65.9 (1,674)	65.9 (1,674)
<b>Cargo Box</b>					
Volume cu. ft. (litres)	78.5 (2,224)	65.4 (1,851)	78.5 (2,224)	65.4 (1,851)	78.5 (2,224)
<b>M. Length at floor</b>	98.1 (2,492)	81.9 (2,081)	98.1 (2,492)	81.9 (2,081)	98.1 (2,492)
<b>N. Width at wheelhouse</b>	50.5 (1,282)	50.5 (1,282)	50.5 (1,282)	50.5 (1,282)	50.5 (1,282)
<b>O. Width at floor (max.)</b>	66.9 (1,698)	66.9 (1,698)	66.9 (1,698)	66.9 (1,698)	66.9 (1,698)



## Interior Storage cu. ft. (litres)

Front 40/20/40 split seat centre under-seat lockable storage – 0.42 (12.0)  
 Front flow-through centre console main bin – 1.18 (33.4)  
 Rear Crew Cab 60/40 split bench under-seat lockable storage – 2.27 (64.3)

SRW = single rear wheel DRW = dual rear wheel SWB = short wheelbase (6'¾ cargo box) LWB = long wheelbase (8' cargo box) WB = wheelbase <sup>1</sup>Requires F-250 High-Capacity Trailer Tow Package. <sup>2</sup>Gooseneck tow rating shown. 5th-wheel tow rating limited to 5th-wheel hitch rating of 18,000 lbs. (8,165 kg). <sup>3</sup>Gooseneck tow rating shown. 5th-wheel tow rating limited to 5th-wheel hitch rating of 27,500 lbs. (12,474 kg). <sup>4</sup>Pickup box delete.

Maximum capabilities shown are for properly equipped vehicles with required equipment and a 68-kg (150-lb.) driver. Weight of additional options, equipment, passengers and cargo must be deducted from this weight. For additional information, see your Ford Dealer. **Conventional Towing Notes:** This information also applies to models with Pickup Box Delete option (66D). Trailer tongue load weight should be 10–15% of total loaded trailer weight. Make sure that the vehicle payload (reduced by option weight) will accommodate trailer tongue load weight and the weight of passengers and cargo added to the towing vehicle. The addition of trailer tongue load weight, and the weight of passengers and cargo, cannot cause vehicle weights to exceed the rear GAWR (Gross Axle Weight Rating) or GVWR (Gross Vehicle Weight Rating). These ratings can be found on the vehicle's Safety Compliance Certification Label. Be sure combined weight of vehicle and trailer does not exceed listed GCWR. **5th-Wheel Towing Notes:** This information also applies to models with Pickup Box Delete option (66D). Trailer kingpin weight should be 15–25% of total loaded trailer weight. Make sure that the vehicle payload (reduced by option weight) will accommodate trailer kingpin weight and the weight of passengers and cargo added to the towing vehicle. The addition of trailer kingpin weight, and the weight of passengers and cargo, cannot cause vehicle weights to exceed the rear GAWR (Gross Axle Weight Rating) or GVWR (Gross Vehicle Weight Rating). These ratings can be found on the vehicle's Safety Compliance Certification Label. Be sure combined weight of vehicle and trailer does not exceed listed GCWR.

## Maximum Loaded Trailer Towing Weight Ratings lbs. (kg) – SAE J2807 Compliant

	Engine	Axle Ratio	GCWR	Regular Cab			SuperCab			Crew Cab				
				Conventional Weight Carrying	Weight Distribution	5th-Wheel/ Gooseneck	Conventional Weight Carrying	Weight Distribution	5th-Wheel/ Gooseneck	Conventional Weight Carrying	Weight Distribution	5th-Wheel/ Gooseneck		
<b>F-250 SRW 4x2</b>	6.2L Gas	3.73	19,500 (8,845)	13,000 (5,897)	13,300 (6,033)	13,200 (5,988)	13,000 (5,897)	13,000 (5,897)	13,000 (5,897)	12,900 (5,851)	12,900 (5,851)	12,900 (5,851)		
		4.30	22,000 (9,979)	13,000 (5,897)	14,000 (6,350)	15,700 (7,122)	13,000 (5,897)	14,000 (6,350)	15,500 (7,031)	14,000 (6,350)	15,000 (6,804)	15,400 (6,985)		
	6.7L Diesel	3.31/3.55	24,300 (11,022)	—	—	—	—	—	—	—	—	16,800 (7,620)		
			24,800 (11,249)	—	—	—	—	17,400 (7,893)	—	—	—	—		
	6.2L Gas	3.73	19,500 (8,845)	12,900 (5,851)	12,900 (5,851)	12,800 (5,806)	12,600 (5,715)	12,600 (5,715)	12,600 (5,715)	12,500 (5,670)	12,500 (5,670)	12,500 (5,670)		
			4.30	22,000 (9,979)	15,000 (6,804)	15,000 (6,804)	15,300 (6,940)	15,000 (6,804)	15,000 (6,804)	15,100 (6,849)	15,000 (6,804)	15,000 (6,804)	15,000 (6,804)	
	6.7L Diesel	3.31/3.55	21,900 (9,934)	—	—	—	—	—	—	—	—	14,000 (6,350)		
			22,500 (10,206)	—	—	—	—	—	14,700 (6,668)	—	—	—		
	6.2L Gas	3.73	19,500 (8,845)	12,900 (5,851)	12,900 (5,851)	12,800 (5,806)	12,600 (5,715)	12,600 (5,715)	12,600 (5,715)	12,500 (5,670)	12,500 (5,670)	12,500 (5,670)		
			4.30	22,000 (9,979)	15,000 (6,804)	15,000 (6,804)	15,300 (6,940)	15,000 (6,804)	15,000 (6,804)	15,100 (6,849)	15,000 (6,804)	15,000 (6,804)	15,000 (6,804)	
	6.7L Diesel	3.31/3.55	21,900 (9,934)	—	—	—	—	—	—	—	—	14,000 (6,350)		
			22,500 (10,206)	—	—	—	—	—	—	—	—	—		
	6.2L Gas	3.73	19,500 (8,845)	13,000 (5,897)	13,100 (5,942)	13,000 (5,897)	12,900 (5,851)	12,900 (5,851)	12,800 (5,806)	12,700 (5,761)	12,700 (5,761)	12,700 (5,761)		
			4.30	23,000 (10,433)	13,000 (5,897)	14,000 (6,350)	16,500 (7,484)	13,000 (5,897)	14,000 (6,350)	16,300 (7,394)	15,000 (6,804)	15,000 (6,804)	16,200 (7,348)	
	6.7L Diesel	3.31/3.55	28,700 (13,018)	14,000 (6,350)	15,000 (6,804)	21,500 (9,752) <sup>2</sup>	15,000 (6,804)	15,000 (6,804)	21,300 (9,662) <sup>2</sup>	18,000 (8,165)	18,000 (8,165)	21,000 (9,525) <sup>2</sup>		
			28,700 (13,018)	14,000 (6,350)	15,000 (6,804)	—	—	—	—	—	—	—		
	6.2L Gas	3.73	19,500 (8,845)	12,600 (5,715)	12,600 (5,715)	12,600 (5,715)	12,400 (5,625)	12,400 (5,625)	12,400 (5,625)	12,300 (5,579)	12,300 (5,579)	12,200 (5,534)		
			4.30	23,000 (10,433)	15,000 (6,804)	15,000 (6,804)	16,100 (7,303)	15,000 (6,804)	15,000 (6,804)	15,900 (7,212)	15,000 (6,804)	15,000 (6,804)	15,700 (7,122)	
	6.7L Diesel	3.31/3.55	28,200 (12,792)	—	—	—	—	—	—	—	—	20,000 (9,072)		
			28,700 (13,018)	14,000 (6,350)	15,000 (6,804)	21,100 (9,571) <sup>2</sup>	15,000 (6,804)	15,000 (6,804)	20,900 (9,480) <sup>2</sup>	15,000 (6,804)	15,000 (6,804)	20,600 (9,344) <sup>2</sup>		
	6.2L Gas	3.73	20,000 (9,072)	13,200 (5,988)	13,200 (5,988)	13,100 (5,942)	12,700 (5,761)	12,700 (5,761)	12,700 (5,761)	12,500 (5,670)	12,500 (5,670)	12,500 (5,670)		
			4.30	23,500 (10,660)	16,700 (7,575)	16,700 (7,575)	16,600 (7,530)	16,200 (7,348)	16,200 (7,348)	16,200 (7,348)	16,000 (7,258)	16,000 (7,258)	16,000 (7,258)	
	6.7L Diesel	3.55	36,000 (16,330)	18,000 (8,165)	21,000 (9,525)	28,400 (12,882) <sup>3</sup>	18,000 (8,165)	21,000 (9,525)	28,000 (12,701) <sup>3</sup>	19,000 (8,618)	21,000 (9,525)	27,700 (12,565) <sup>3</sup>		
			4.10	40,000 (18,144)	18,000 (8,165)	21,000 (9,525)	32,000 (14,515) <sup>3</sup>	18,000 (8,165)	21,000 (9,525)	32,000 (14,515) <sup>3</sup>	19,000 (8,618)	21,000 (9,525)	31,700 (14,379) <sup>3</sup>	
	6.2L Gas	3.73	20,000 (9,072)	12,700 (5,761)	12,700 (5,761)	12,700 (5,761)	12,300 (5,579)	12,300 (5,579)	12,300 (5,579)	12,100 (5,489)	12,100 (5,489)	12,100 (5,489)		
			4.30	23,500 (10,660)	16,200 (7,348)	16,200 (7,348)	16,200 (7,348)	15,800 (7,167)	15,800 (7,167)	15,800 (7,167)	15,600 (7,076)	15,600 (7,076)	15,600 (7,076)	
	6.7L Diesel	3.55	36,000 (16,330)	18,000 (8,165)	20,000 (9,072)	27,900 (12,655) <sup>3</sup>	19,000 (8,618)	21,000 (9,525)	27,600 (12,519) <sup>3</sup>	21,000 (9,525)	21,000 (9,525)	27,300 (12,383) <sup>3</sup>		
			4.10	40,000 (18,144)	18,000 (8,165)	20,000 (9,072)	31,900 (14,470) <sup>3</sup>	19,000 (8,618)	21,000 (9,525)	31,600 (14,334) <sup>3</sup>	21,000 (9,525)	21,000 (9,525)	31,300 (14,198) <sup>3</sup>	
<b>F-450 DRW 4x4</b>	6.7L Diesel	4.30	41,800 (18,960)	—	—	—	—	—	—	—	—	21,000 (9,525)	21,000 (9,525)	32,500 (14,742) <sup>3</sup>

## Maximum Payload Weight Ratings lbs. (kg)

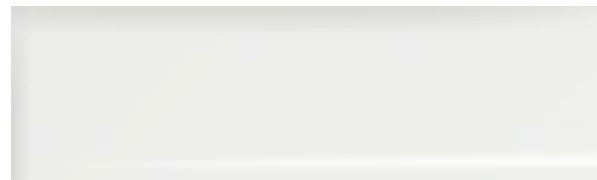
	Max. GVWR	Regular Cab 141.5" WB	SuperCab 147.9" WB	164.1" WB	Crew Cab 159.7" WB	175.9" WB	Max. GVWR	Regular Cab 141.5" WB	SuperCab 147.9" WB	164.1" WB	Crew Cab 159.7" WB	175.9" WB	
<b>F-250 SRW 4x2</b>	9,900 (4,491)	4,150 (1,882)	3,900 (1,769)	3,810 (1,728)	3,780 (1,715)	3,540 (1,606)	<b>F-350 SRW 4x4</b>	9,900 (4,491)	3,500 (1,588)	3,290 (1,492)	3,180 (1,442)	3,140 (1,424)	2,900 (1,315)
	9,950 (4,513)	4,200 (1,905)	—	—	—</								

# EXTERIOR & INTERIOR CHOICES

	Two-Tone	XL	XLT	LARIAT	KING RANCH™	PLATINUM
White Platinum Metallic Tri-coat <sup>1</sup>	■ ■			5 6	7	8 9
Oxford White	■ ■	1 2	3 4	5 6	7	
Ingot Silver Metallic	■	1 2	3 4	5 6		8 9
White Gold Metallic	■		4	5 6	7	8 9
Caribou Metallic		1 2	3 4	5 6	7 <sup>2</sup>	
Bronze Fire Metallic	■		4	5 6	7	

	Two-Tone	XL	XLT	LARIAT	KING RANCH	PLATINUM
Race Red		1 2	3 4	5 6		
Ruby Red Metallic Tinted Clearcoat <sup>1</sup>	■ ■		3 4	5 6	7	8 9
Blue Jeans Metallic	■ ■	1 2	3 4	5 6	7	
Magnetic Metallic		1 2	3	6		8 9
Shadow Black	■ ■	1 2	3 4	5 6	7	8 9

■ Caribou Two-Tone Accent exterior standard on KING RANCH; optional on LARIAT ■ Magnetic Two-Tone Accent exterior optional on LARIAT with Black Leather interior only



White Platinum Metallic Tri-coat



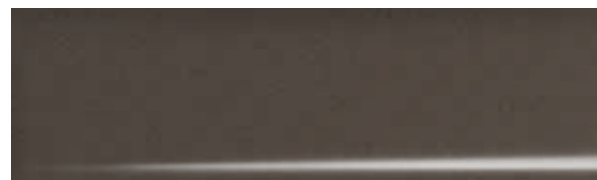
Oxford White



Ingot Silver Metallic



White Gold Metallic



Caribou Metallic



Bronze Fire Metallic



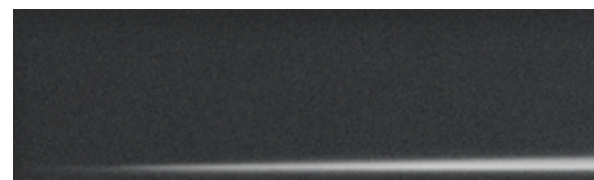
Race Red



Ruby Red Metallic Tinted Clearcoat



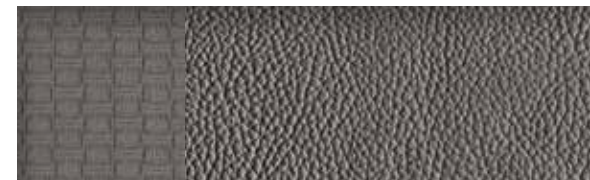
Blue Jeans Metallic



Magnetic Metallic



Shadow Black



Medium Earth Grey Vinyl

1



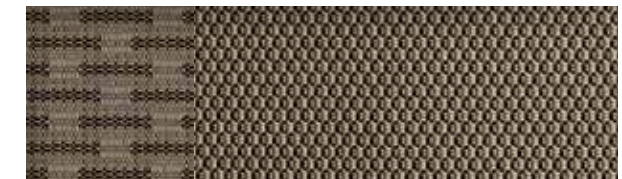
Dark Earth Grey Cloth

2



Medium Earth Grey Cloth

3



Medium Light Camel Cloth

4



Medium Light Camel Leather with Perforated Inserts

5



Black Leather with Perforated Inserts

6



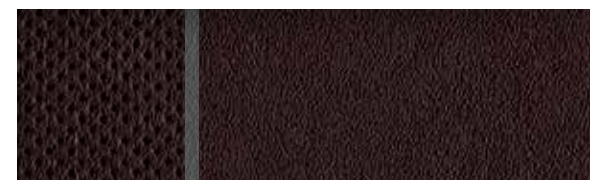
Mesa Brown Leather with Perforated Inserts

7



Black Luxury Leather with Perforated Inserts and Agate Tuxedo Stripes

8



Brunello Luxury Leather with Perforated Inserts and Agate Tuxedo Stripes

9

Colours are representative only. See your Ford of Canada Dealer for actual paint/trim options. <sup>1</sup>Additional charge. <sup>2</sup>Requires KING RANCH Monochromatic Paint Package.

XLT with XLT Value Package in Oxford White accessorized with 5" Black step bars, hood and side window deflectors, hard-folding tonneau cover by Advantage<sup>1</sup>, heavy-duty splash guards, chrome front tow hooks, LED foglights by Putco<sup>®1</sup> and rear wheel-well liners

**Exterior**

- Exhaust tips
- Exterior trim kits<sup>1</sup>
- Fender flares<sup>1</sup>
- Fifth-wheel hitch kits (A)
- Foglights<sup>1</sup>
- Ford Custom graphics<sup>1</sup>
- Hood and side window deflectors
- Hood protector<sup>1</sup>
- Racks and carriers<sup>1</sup>
- Splash guards
- Sportz<sup>®</sup> tents<sup>1</sup>
- Stainless steel wheel covers<sup>1</sup>
- Step bars
- Trailer towing accessories
- Wheel lock kit
- Wheel-well liners

**Interior**

- Ash cup/coin holders
- Cargo organizers and protectors
- First aid and roadside assistance kits<sup>1</sup>
- Floor liners (B)
- In-vehicle safe<sup>1</sup>
- Protective seat covers<sup>1</sup>
- Tablet cradle<sup>1</sup>

**Bed Products**

- Bed cleats and cargo nets
- Bed extenders, liners and mats
- Bed rails<sup>1</sup>
- Bed standard interface plate
- Bedliner plug kits
- Stowable loading ramps (C)

- Bed tailgate viscous dampening cartridge
- Commercial-grade tool/cargo box<sup>1</sup>
- Pivot storage box<sup>1</sup>
- Retractable stake pocket tie-downs<sup>1</sup>
- Sportliners<sup>1</sup>
- Tonneau covers<sup>1</sup>

**Electronics**

- Ford Telematics<sup>™</sup> powered by Telogis<sup>®1</sup>
- Keyless entry keypad
- Remote start systems (D)
- Strobe and work task lights<sup>1</sup>
- Vehicle Security System
- Warning sensor systems<sup>1</sup>



<sup>1</sup>Ford Licensed Accessory.

# OUR COMMITMENT TO YOU: PEACE-OF-MIND PROTECTION

- Basic Coverage: 3 years/60,000 km
- Gas Engine Powertrain Limited Warranty: 5 years/100,000 km
- Diesel Engine Powertrain Limited Warranty: 5 years/160,000 km
- Corrosion Warranty: 5 years/unlimited distance on aluminum body panels
- Roadside Assistance: 5 years/100,000 km

Certain conditions apply. For more information on these warranties and coverages, ask your local Ford of Canada Dealer or visit ford.ca.

**Ford Protect Plans.** Help protect your investment and add to your peace of mind by complementing your vehicle purchase or lease with a Ford Protect plan. Ford Protect offers you protection against unexpected repair costs after your Basic Coverage in the New Vehicle Limited Warranty expires by covering many vehicle components. It's confidence for the road ahead. Ask your dealer for a Ford Protect plan, the only service contract backed exclusively by Ford and honoured at all Ford Lincoln dealerships.

**Ford Credit.** Get the ride you want. Whether you plan to lease or finance, you'll find the choices that are right for you at Ford Credit. Ask your local Ford of Canada Dealer for details or check us out at fordcredit.ca.

**Ford Original Accessories** that are properly installed by the authorized Dealer that sold the accessory will be warranted for whichever provides you the greatest benefit: 24 months/unlimited distance, or the remainder of your 3-year/60,000-km New Vehicle Limited Warranty. Ford Licensed Accessories (FLA) are warranted by the accessory manufacturer's warranty. FLA are designed and developed by the accessory manufacturer and have not been designed or tested to Ford Motor Company engineering requirements. Contact your local Ford of Canada Dealer for details and/or a copy of all limited warranties.

**For prompt, courteous answers to your questions:  
Ford Customer Relationship Centre 1-800-565-3673;  
Ford Credit Customer Service Centre 1-877-636-7346.**

# BAD. F-250

**MAXIMUM CAPABILITIES<sup>2</sup>**  
Towing: 18,600 lbs. (8,437 kg)  
Payload: 4,200 lbs. (1,905 kg)  
GVWR: 10,000 lbs. (4,536 kg)  
GCWR: 25,700 lbs. (11,657 kg)

**ENGINES**  
6.2L Gas V8  
6.7L Power Stroke<sup>®</sup> V8 Turbo Diesel

**DRIVETRAINS**  
Single Rear Wheel (SRW)  
4x2 or 4x4

**CAB TYPES**  
Regular Cab, SuperCab or Crew Cab

**BOX LENGTHS**  
6¾' or 8'

# BADDER. F-350

**MAXIMUM CAPABILITIES<sup>2</sup>**  
Towing: 32,000 lbs. (14,515 kg)  
**BEST-IN-CLASS Payload: 7,630 lbs. (3,461 kg)**  
GVWR: 14,000 lbs. (6,350 kg)  
GCWR: 40,000 lbs. (18,144 kg)

**ENGINES**  
6.2L Gas V8  
6.7L Power Stroke V8 Turbo Diesel

**DRIVETRAINS**  
SRW or Dual Rear Wheel (DRW)  
4x2 or 4x4

**CAB TYPES**  
Regular Cab, SuperCab or Crew Cab

**BOX LENGTHS**  
6¾' or 8'

# BADDEST. F-450

**MAXIMUM CAPABILITIES<sup>2</sup>**  
**BEST-IN-CLASS Towing: 32,500 lbs. (14,742 kg)**  
Payload: 5,320 lbs. (2,413 kg)  
GVWR: 14,000 lbs. (6,350 kg)  
**BEST-IN-CLASS GCWR: 41,800 lbs. (18,960 kg)**

**ENGINE**  
6.7L Power Stroke V8 Turbo Diesel

**DRIVETRAIN**  
DRW 4x4

**CAB TYPE**  
Crew Cab

**BOX LENGTH**  
8'

<sup>2</sup>When properly equipped.

